

FOR LEASE

# SWAN ISLAND INDUSTRY CENTER

6650 N BASIN AVE, BLDG 4, SUITE G  
PORTLAND, OR

*One of the premier industrial  
parks in the close-in Portland  
industrial submarkets.*

KIDDER.COM

SWANISLANDPORTLAND.COM

**km** Kidder  
Mathews



## SWAN ISLAND INDUSTRY CENTER



*Swan Island has excellent freeway access to I-5, I-405, I-84 and downtown Portland and provides unparalleled access to the entire Portland metropolitan area.*

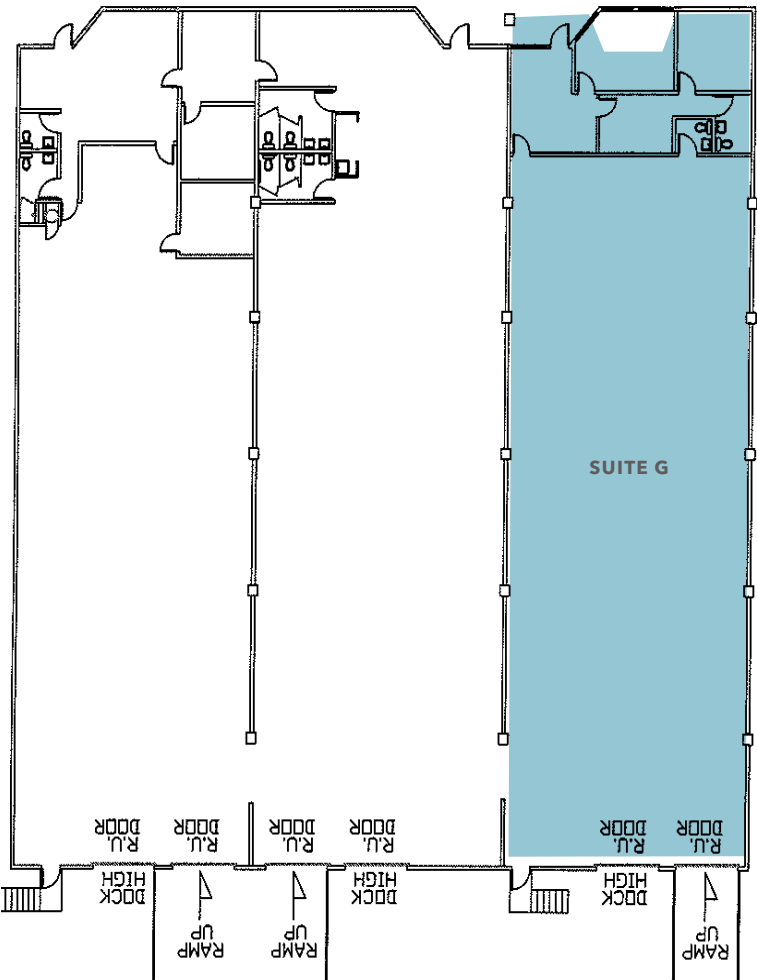
SIZE AVAILABLE	5,000 SF
OFFICE SPACE	786 SF
CLEAR HEIGHT	±21' 6"
DOCK DOORS	1
GRADE DOORS	1
LEASE RATE	Contact broker

→ [SWANISLANDPORTLAND.COM](https://swanislандportland.com)

**5K SF**  
AVAILABLE

**CALL**  
FOR LEASE RATE

FIRST FLOOR PLAN



5K SF

AVAILABLE

NOW

AVAILABLE

*The park consists of four high quality concrete tilt up industrial buildings totaling 256,247 square feet and are some of the more functional industrial buildings in the Downtown Portland core area*



# HIGHLY- ACCESSIBLE LOCATION

Close to University of Portland, PDX airport,  
and Legacy Emanuel Medical Center

Conveniently located near major  
confluences Interstate 5, 405, and 84

Easy for visitors to locate

**25 MIN**  
PDX AIRPORT

**15 MIN**  
PORTLAND CBD





# SWAN ISLAND INDUSTRY CENTER

*Exclusively leased by*

**STEVEN KLEIN**

503.221.2260

[steven.klein@kidder.com](mailto:steven.klein@kidder.com)

**PETER STALICK**

503.706.8180

[peter.stalick@kidder.com](mailto:peter.stalick@kidder.com)

**BRENDAN MURPHY**

503.721.2705

[brendan.murphy@kidder.com](mailto:brendan.murphy@kidder.com)

[SWANISLANDPORTLAND.COM](http://SWANISLANDPORTLAND.COM)

[KIDDER.COM](http://KIDDER.COM)

This information supplied herein is from sources we deem reliable. It is provided without any representation, warranty, or guarantee, expressed or implied as to its accuracy. Prospective Buyer or Tenant should conduct an independent investigation and verification of all matters deemed to be material, including, but not limited to, statements of income and expenses. Consult your attorney, accountant, or other professional advisor.

