



Swan Island Industry Center

6870 N FATHOM ST, PORTLAND, OR

FOR LEASE



Building 2, Suite D / E

SWAN ISLAND INDUSTRY CENTER

is one of the premier industrial parks in the Close-In Portland industrial submarkets

MODERN & FUNCTIONAL industrial buildings located close to Downtown Portland

FOUR high quality concrete tilt up industrial buildings totaling 256,247 SF

EXCELLENT freeway access to I-5, I-405, I-84 & Downtown Portland

±19,615 SF shell

3,091 SF office space

±21'6" minimum clear height

ONE covered dock-high door and 1 grade level door

LEASE RATE contact for quote

FOR MORE INFORMATION
please visit our website at
www.swanislandportland.com

STEVEN KLEIN

503.221.2260

steven.klein@kidder.com

PETER STALICK

503.221.2272

peter.stalick@kidder.com

KIDDER.COM

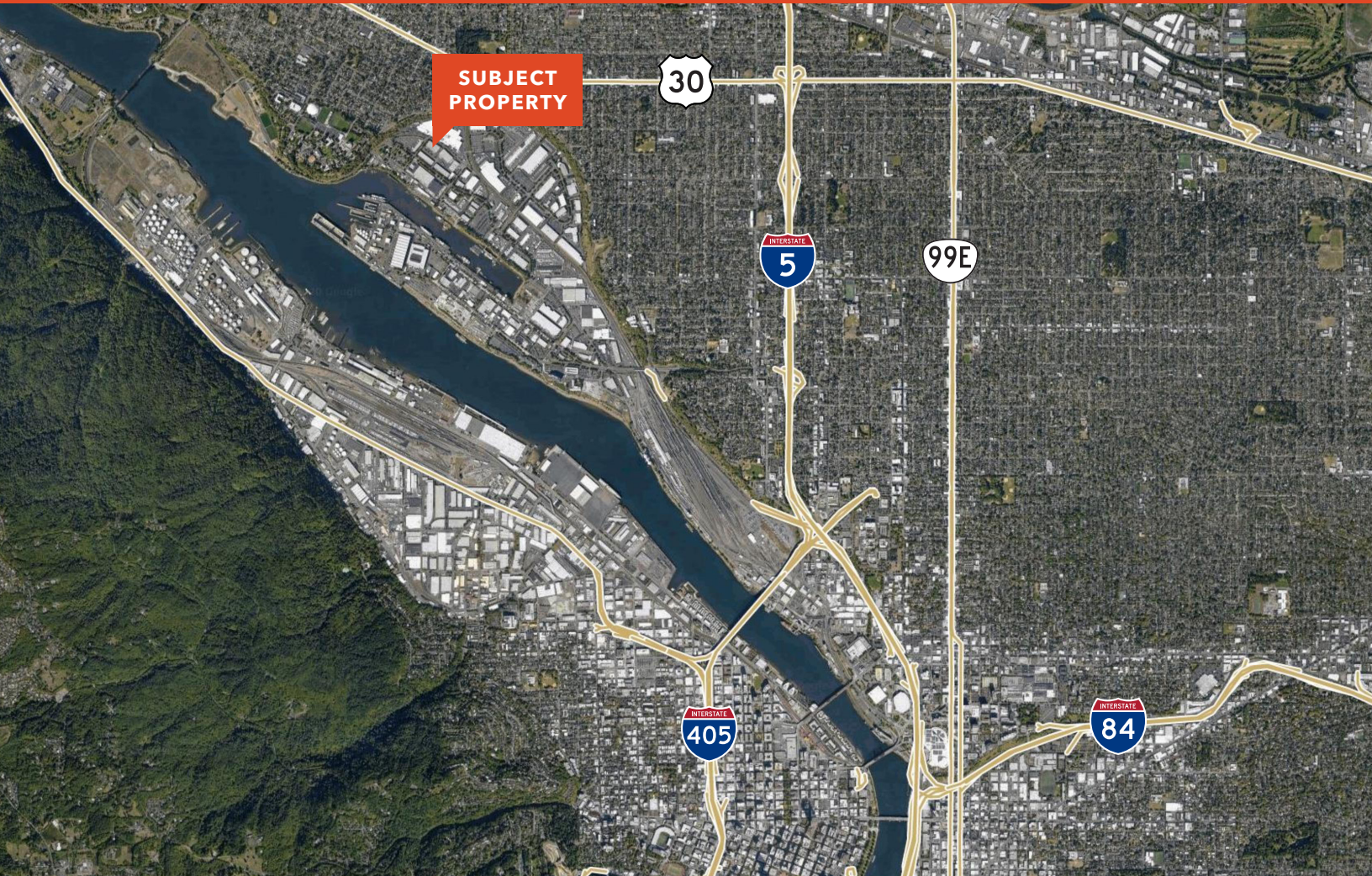
**Kidder
Mathews**

This information supplied herein is from sources we deem reliable. It is provided without any representation, warranty, or guarantee, expressed or implied as to its accuracy. Prospective Buyer or Tenant should conduct an independent investigation and verification of all matters deemed to be material, including, but not limited to, statements of income and expenses. Consult your attorney, accountant, or other professional advisor.

FOR LEASE

Swan Island Industry Center

6870 N FATHOM ST, PORTLAND, OR



Please visit our website
for detailed property
information and floor plans.

www.swanislandportland.com

STEVEN KLEIN
503.221.2260
steven.klein@kidder.com

PETER STALICK
503.221.2272
peter.stalick@kidder.com

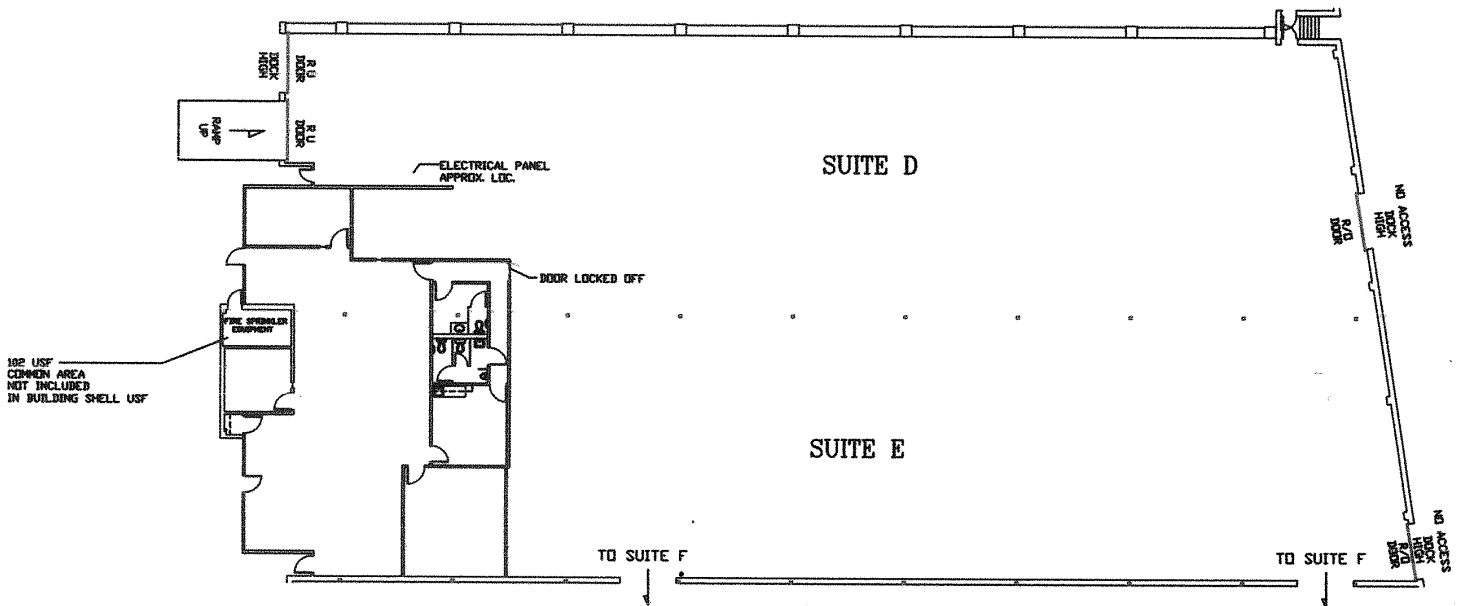
KIDDER.COM

This information supplied herein is from sources we deem reliable. It is provided without any representation, warranty, or guarantee, expressed or implied as to its accuracy. Prospective Buyer or Tenant should conduct an independent investigation and verification of all matters deemed to be material, including, but not limited to, statements of income and expenses. Consult your attorney, accountant, or other professional advisor.



Swan Island Industry Center

Building 2, Suite D / E



PETER STALICK
503.221.2272
peter.stalick@kidder.com

